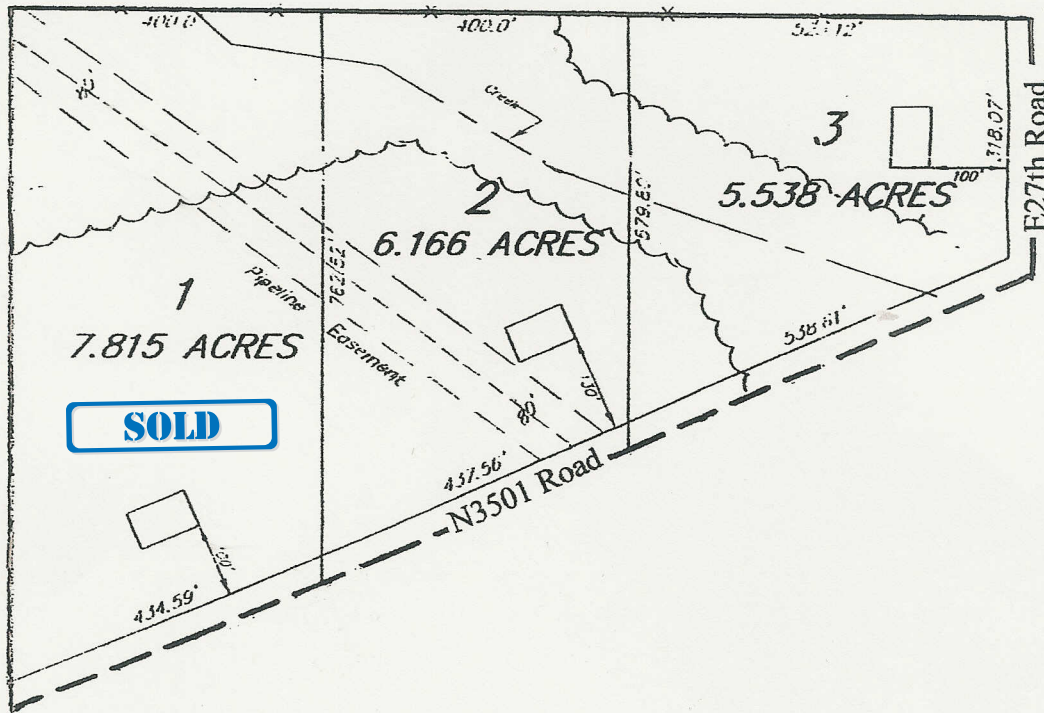


R E A L T Y



Partly Wooded Buildable Lots - Serena Schools, LaSalle County, Miller Township, Section 4.

Lot # 1 7.815 acres mol, SOLD , Lot # 2 6.166 acres mol \$129,900.00 Lot # 3 5.538 acres mol \$129,900.00

For more information contact Joe Ludwig at 630-774-5887

THE PARTIES UNDERSTAND AND AGREE THAT IT IS ILLEGAL FOR EITHER THE OWNER OR THE BROKER TO REFUSE TO DISPLAY OR SELL TO ANY PERSON BECAUSE OF ONES MEMBERSHIP IN A PROTECTED CLASS, I.E., RACE, COLOR, RELIGION, NATIONAL ORIGIN, SEX, ANCESTRY, AGE, MARITAL STATUS, PHYSICAL OR MENTAL HANDICAP, FAMILIAL STATUS, OR ANY OTHER CLASS PROTECTED BY ARTICLE 3 OF THE ILLINOIS HUMAN RIGHTS ACT.

7S838 Rhodes St. • Big Rock, IL 60511 • Phone: (630) 556-9969 • Fax: (630) 556-9949