



# Rooster Ag' Realty

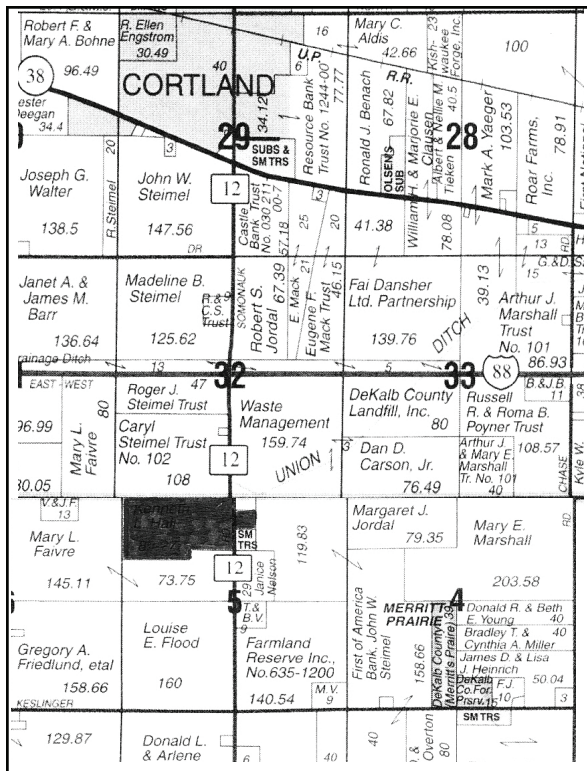
*Don't let your money collect dust, invest in dirt!*

**Cortland, Pierce Township, DeKalb Co. 89+/- acres with 2 houses and out buildings.**

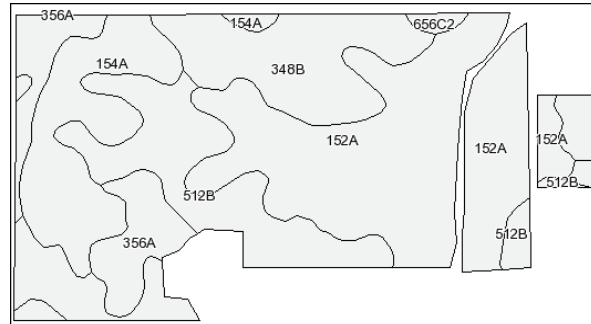
**Good soils. Great location.**

**Available for the 2012 crop year!**

**\$10,995 per acre**



**Call Joe Ludwig for more information  
630.774.5887**



Code	Soil Description	Acres	Percent of field	Non-Irr Class	*Corn	*Grass legume hay	*Grass legume pasture	*Oats	*Soybeans	*Winter wheat
152A	Drummer silty clay loam, 0 to 2 percent slopes	30.2	37.4%	IIw	173	5	7.4	89	56	65
512B	Danabrook silt loam, 2 to 5 percent slopes	17.7	21.9%	Ile	166	5.7	8.4	89	52	65
154A	Flanagan silt loam, 0 to 2 percent slopes	11.7	14.6%	I	175	5.3	7.8	92	56	69
348B	Wingate silt loam, 2 to 5 percent slopes	11	13.7%	Ile	148	4.9	7.1	81	46	60
356A	Elpaso silty clay loam, 0 to 2 percent slopes	7.8	9.7%	IIw	176	5.2	7.7	92	57	60
662B	Barony silt loam, 2 to 5 percent slopes	1.3	1.6%	Ile	153	5	7.3	79	48	59
656C2	Octagon silt loam, 4 to 6 percent slopes, eroded	0.9	1.1%	Ile	134	4.2	6.3	66	44	55
<b>Weighted Average</b>					<b>167.9</b>	<b>5.2</b>	<b>7.7</b>	<b>88.2</b>	<b>53.6</b>	<b>64.2</b>